

RCSL: 44-RT1158

pp: 1 : 9

Author: Knud E. Hansen

Edited: October, 1975

Timing Diagrams
for FDC 703

Keywords: FDC 703, Timing Diagrams.

Abstracts: This paper contains timing diagrams for the Floppy Disc
Controller, FDC 703.

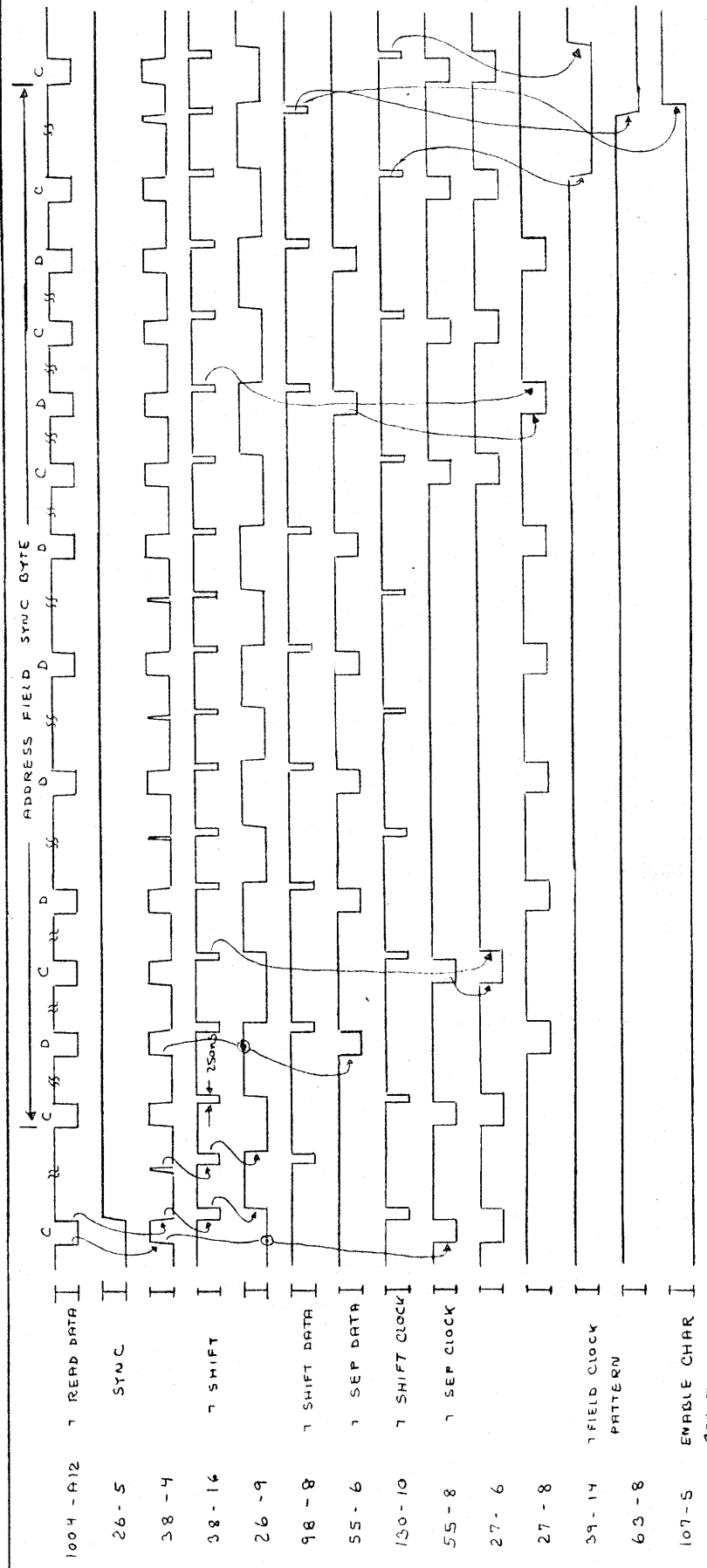
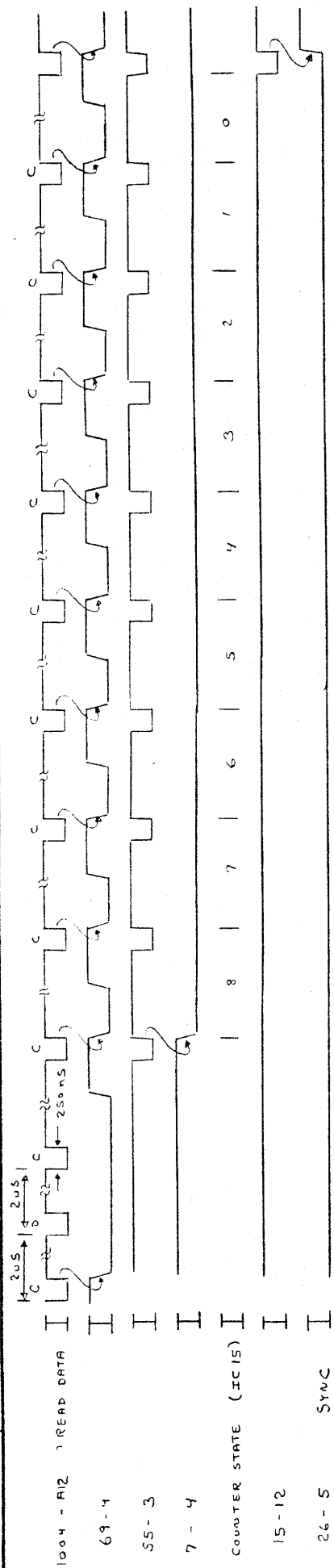
CONTENTS

Page

TC1 BIT-SYNCHRONIZATION	1
TC2 CLOCK-DATA SEPARATION AND CHAR. SYNCHRONIZATION ...	1
TC3 READING OF THE ADDRESS PART	2
TC4 READING OF THE DATA PART	3
TC5 TERMINATION OF READING A SECTOR	4
TC6 WRITING THE DATA PART OF A SECTOR	5
TC7 RECALIBRATION COMMAND	6
TC8 TRACK SEARCH COMMAND	7

pp. 1 : 9.

A/S REGNENCENTRALEN	Designed by	Drawn by	Design Check	Replaces Dwg. No.	due to ECN	Replacement Dwg. No.
	271075	KUEH				



Unit	Fbc 703	BIT SYNCHRONIZATION CLOCK - DATA SEPARATION AND CHAR SYNCHRONIZATION TIMING DIAGRAM	TC 1 - 2
Dwg. No.	R 11240		

A/S REGNENTRALEN

Designed by
271075 4054

Drawn by

Dwg. Office Check

Design Check

Replaces Dwg. No.

due to ECN

Replaces by Dwg. No.

Unit

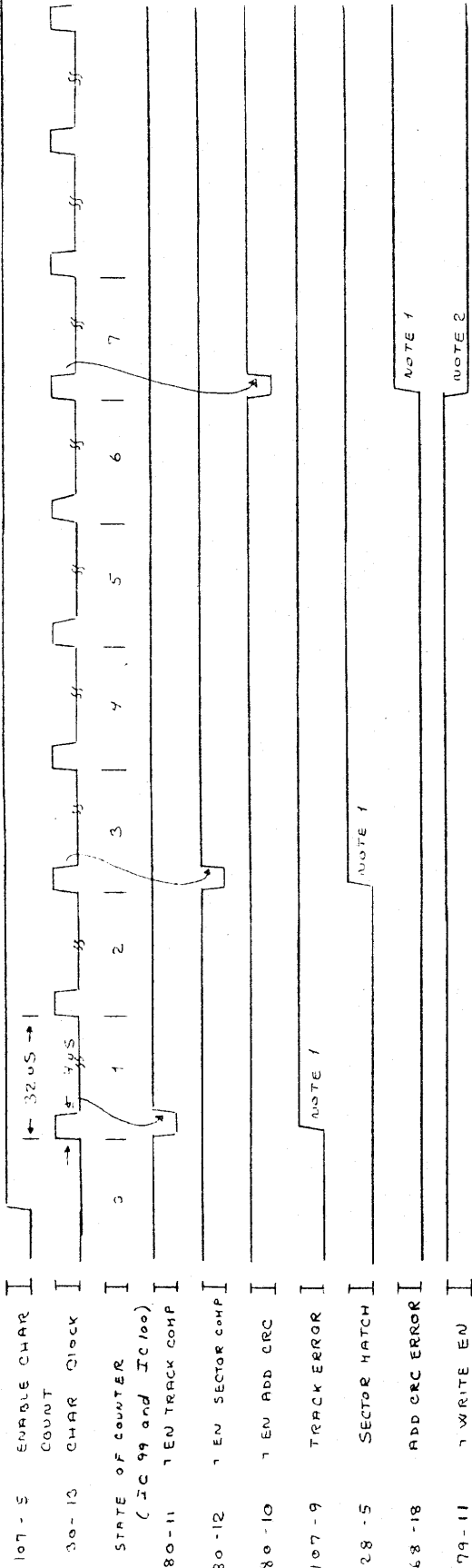
FDD 703

Dwg. No.

1124

READING OF THE ADDRESS PART OF A SECTOR BEFORE
EXECUTING A READ SECTOR OR A WRITE SECTOR COMMAND
TIMING DIAGRAM

TC 3



A/S REGNENTRALEN

Designed by
27105 KUEH

Drawn by

Dwg. Office Check

Design Check

Replaces Dwg. No.

due to ECN

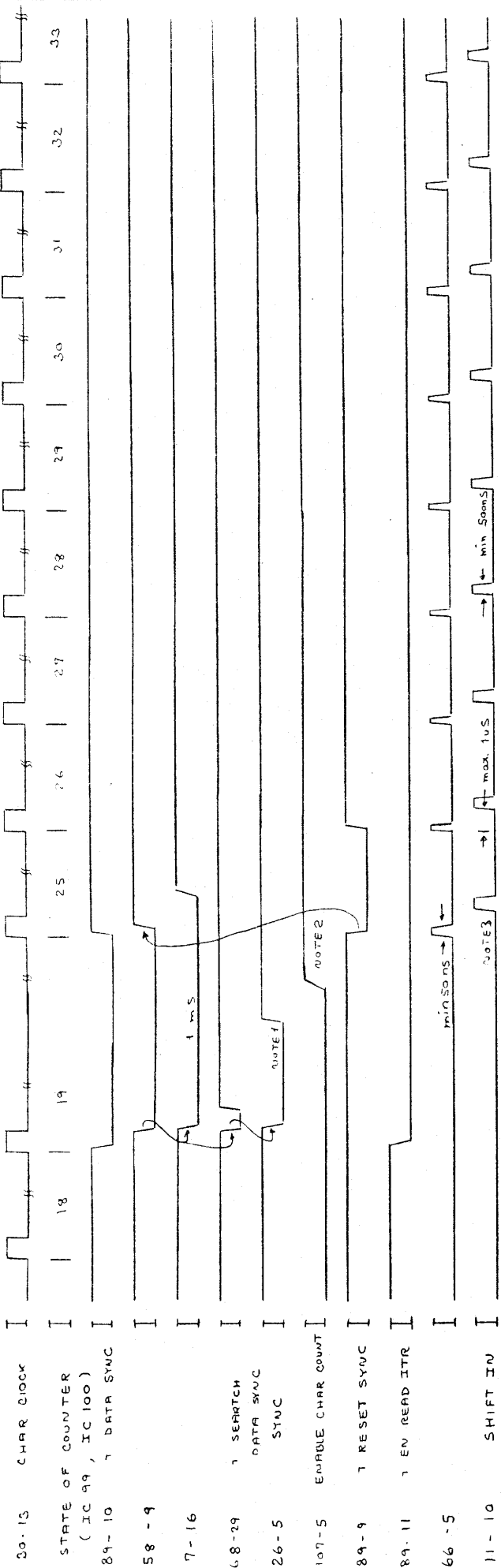
Replaces by Dwg. No.

Unit
FDC 703

Dwg. No.
27105

READING OF THE DATA PART OF A SECTOR

TC 4



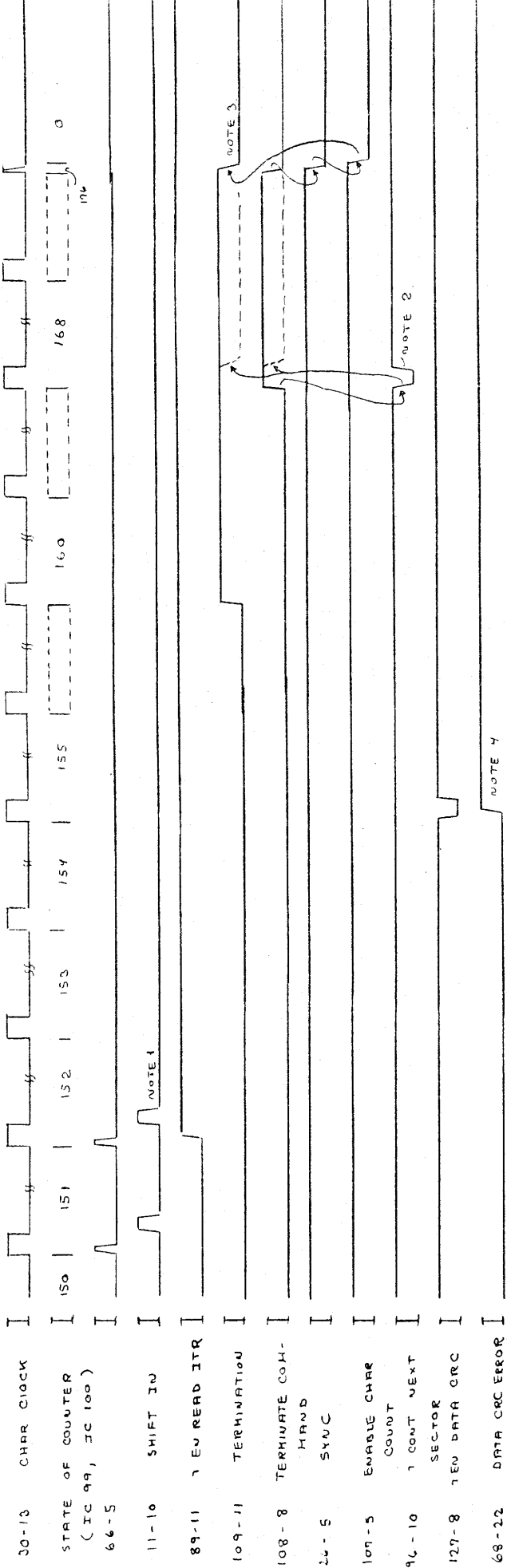
NOTE 1 : BIT SYNCHRONIZATION AS SHOWN ON TC 1

NOTE 2 : CHAR SYNCHRONIZATION AS SHOWN ON TC 2, BUT ONLY THE CLOCK PATTERN IS MONITORED. ON THE LEADING EDGE OF EMABLE CHAR COUNT IS THE DATA FIELD SYNC REGISTER LOADED.

NOTE 3 : THE FIRST DATA CHAR. IS LOADED INTO THE DEVICE BUFFER.

A/S REGNENTRALEN	Designed by 27.10.75 MVEH	Drawn by	Dwg. Office Check	Design Check	Replaces Dwg. No.	due to ECN	Replaced by Dwg. No.
-------------------------	---------------------------------	----------	-------------------	--------------	-------------------	------------	----------------------

Unit FDC 123
Dwg. No. 31043



NOTE 1 : THE LAST DATA CHAR IS LOADED INTO THE DEVICE BUFFER.

NOTE 2 : TERMINATION IF NOT SECTOR MATCH.

NOTE 3 : TERMINATION IF SECTOR MATCH.

NOTE 4 : SET ON THE LEADING EDGE OF T SHIFT CLOCK

TERMINATION OF READING A SECTOR

TIMING DIAGRAM

A/S RECENTRALEN

Designed by
27.10.75 WJF/EM

Drawn by

Dwg. Office

Design Check

Replaces Dwg. No.

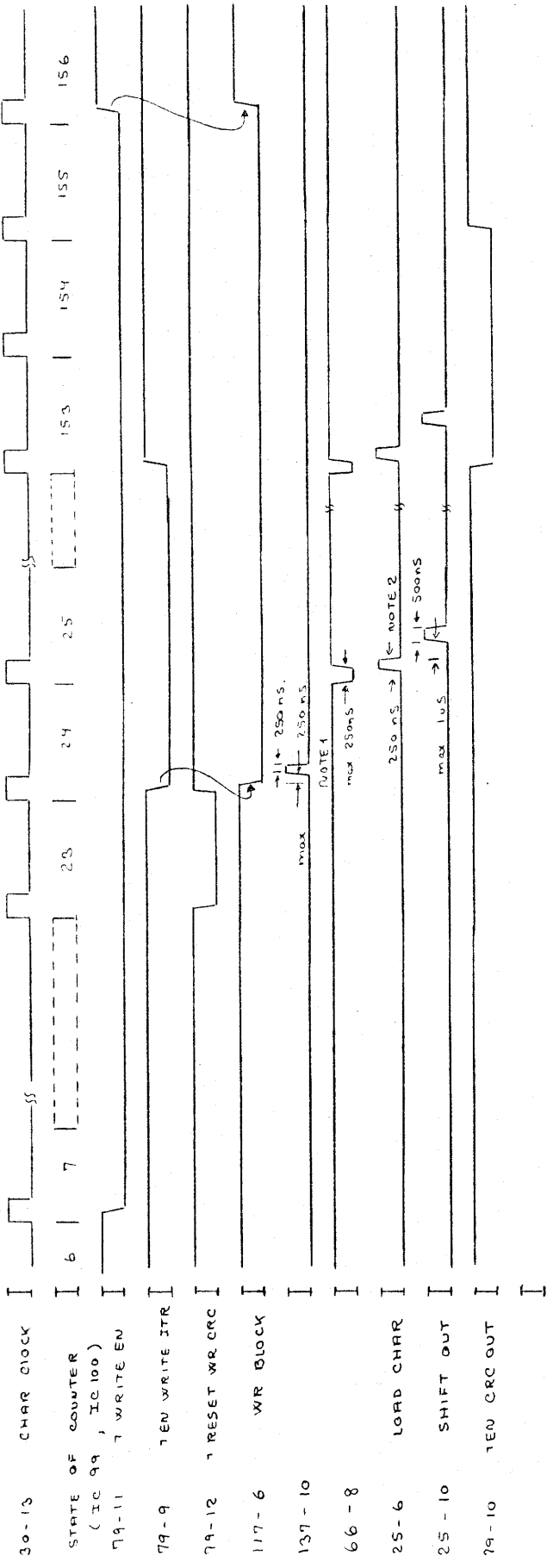
due to ECN

Revised by Dwg. No.

Unit
FDC 703
Dwg. No.
311244

WRITING THE DATA PART OF A SECTOR

TC 6



NOTE 1 : THE DATA FIELD SYNC CHAR IS LOADED INTO THE OUTPUT SHIFT REGISTER

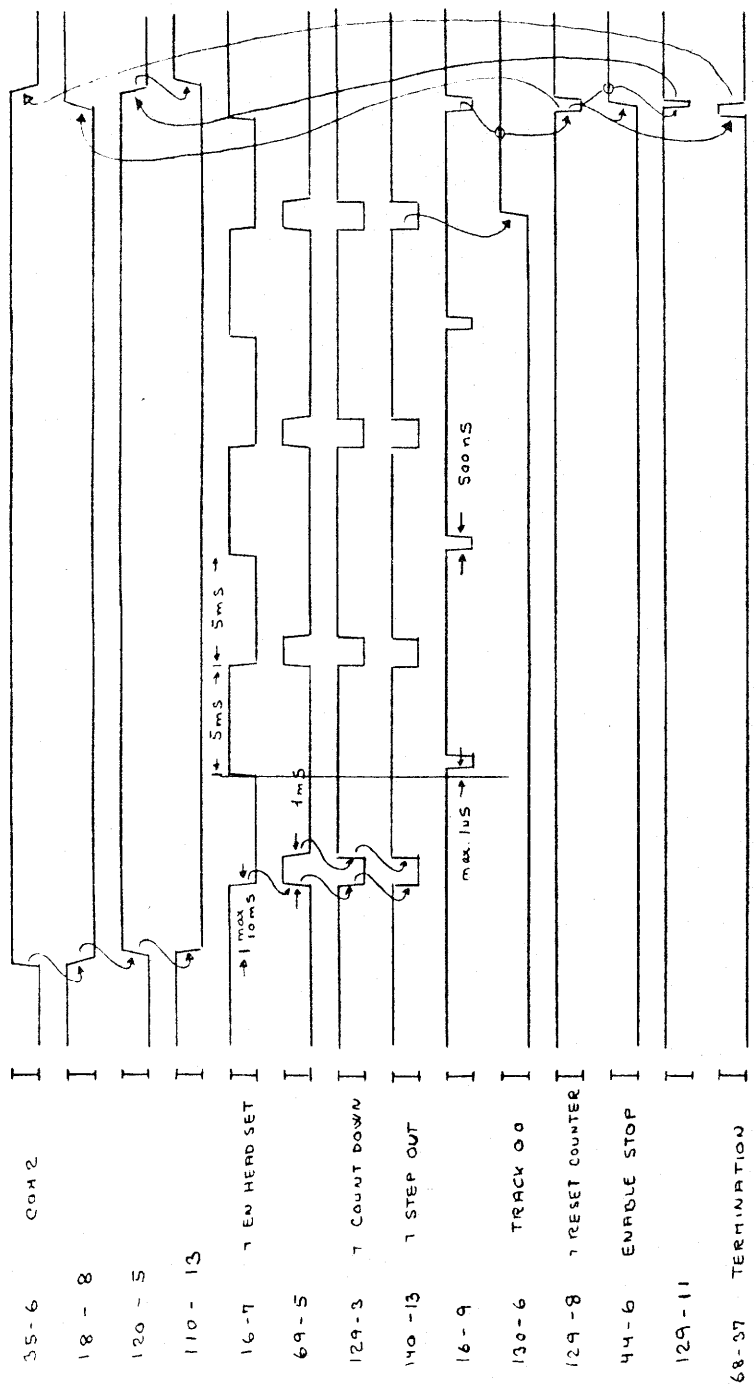
NOTE 2 : THE FIRST DATA CHAR FROM THE DEVICE BUFFER IS LOADED INTO THE OUTPUT SHIFT REGISTER.

AIS REGNECENTRALEN	Designed by	Drawn by	Design Check	Replaces Dwg. No.	due to ECN	Replaced by Dwg. No.
	371305 KUEH					

Unit
FDC 703
Dwg. No.
B 11245

RECALIBRATION COMMAND

TC 7



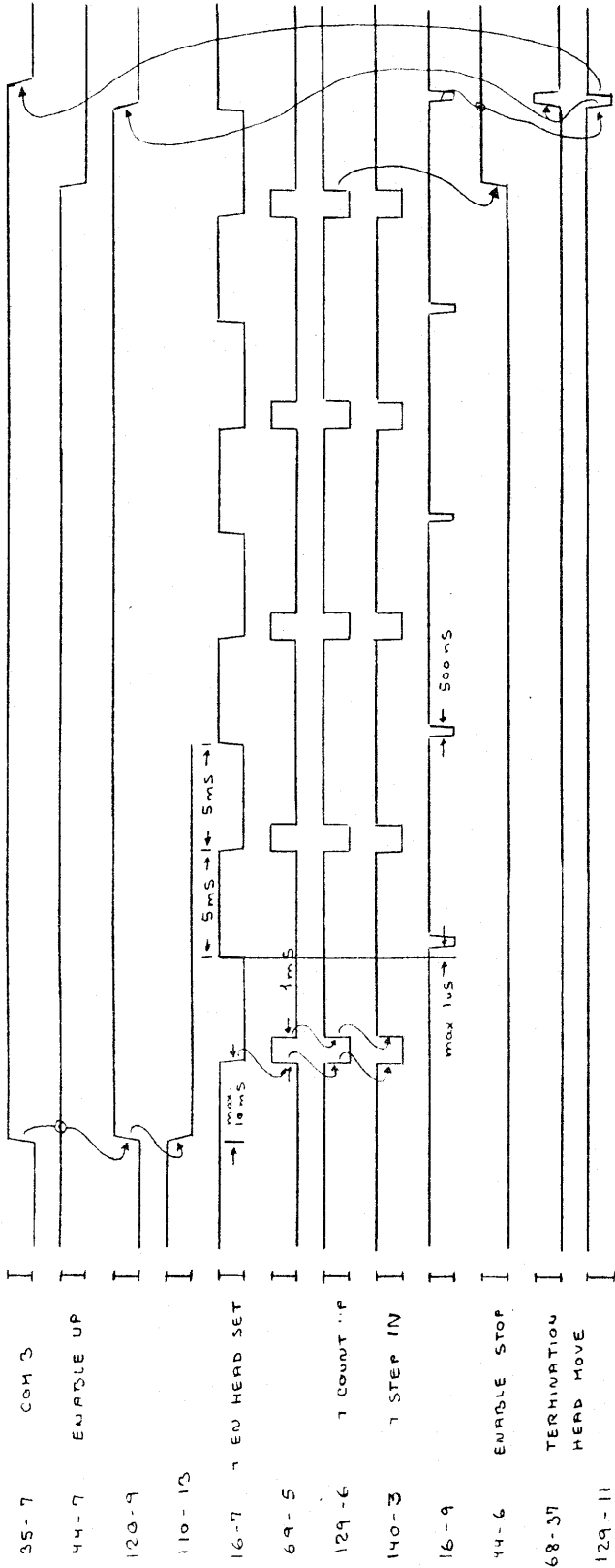
TIMING DIAGRAM

A/S REGCENTRALEN	Designed by	201075 KUEH	Drawn by	Design Check	Replaces Dwg. No.	due to ECN	Replaced by Dwg. No.

Unit
FDC 703
Dwg. No.
B 11246

TRACK SEARCH COMMAND

TC 8



TIMING DIAGRAM