

RCSL: 44 - RT 1911

MANDATORY	<input type="checkbox"/>	RETROFIT ON FAILURE	<input checked="" type="checkbox"/>
WARRANTY	<input type="checkbox"/>	NON WARRANTY	<input checked="" type="checkbox"/>

PAGE 1 OF 4
RE: ECN NO:

SERIAL EFFECTIVITY RCM705, S/N 438-444, 455-486, 500 and upwards	EQUIPMENT AFFECTED RC700 RC702, RCM705, REC702 Rectifier and Interconnection
--	---

NOTE

REASON FOR CHANGE

To decrease the error rate on the 5 1/4" floppy - especially on the inner tracks.

DESCRIPTION OF CHANGE

See page 2

ADDITIONAL COMMENTS

THE FCO-KIT CAN BE ORDERED AT THE SPARE PART STOCK UNDER RC-PARTNUMBER:
ADDRESS: HOVEDVEJEN 9, DK-2600 GLOSTRUP DENMARK

KITS FREE OF CHARGE YES NO

THE FCO-KIT INCLUDES:

QTY	DESCRIPTION	RC P/N
2	Panduit anchor	3001056
10	Panduit SST-1	3001025
50 CM	∅ 0.7 mm wire	
50 CM	∅ 1 mm teflon	

DOCUMENTATION ENCLOSED

ESTIMATED INSTALLATION TIME: 0,5 h

PROJECT ENGINEER SIGN. <i>Kordwin</i>	DATE 15/8-83	DEVELOPMENT MANAGER SIGN. <i>[Signature]</i>	DATE 17/8-83	PRODUCTION MANAGER SIGN. <i>[Signature]</i>	DATE 22/8-83	TECH. SERVICE MANAGER SIGN. <i>[Signature]</i>	DATE 18/8-83
--	-----------------	---	-----------------	--	-----------------	---	-----------------



FIELD CHANGE ORDER

NO. 19-015

PAGE 2 OF 4

DESCRIPTION OF CHANGE:

1. Remove the MIC-board and the floppydisc signalcable from the chassis.
2. Remove the REC702 module from the chassis (make a note on the allocation of the transformer wires in order to ease correct reassembly).
3. Modify the REC702 according to page 3.
4. Cut the Panduits on the internal cabling and deroute the wires as shown on page 4. It is essential that the wires from the POW739 to the floppydrives (P3 and P4 to F1 and F2) are seperated from the small cable connecting the POW739 and REC702.
5. Mount the REC702. The cable (R-P1) should be twisted app. 5 times counterclockwise.
6. Code the FCO label "19-015". If no label is present on the chassis, mount a label on the left transom.
Both the REC702 and the chassis should be coded.
7. Reassemble the MIC-board, the floppydisc signal cable and the chassis.



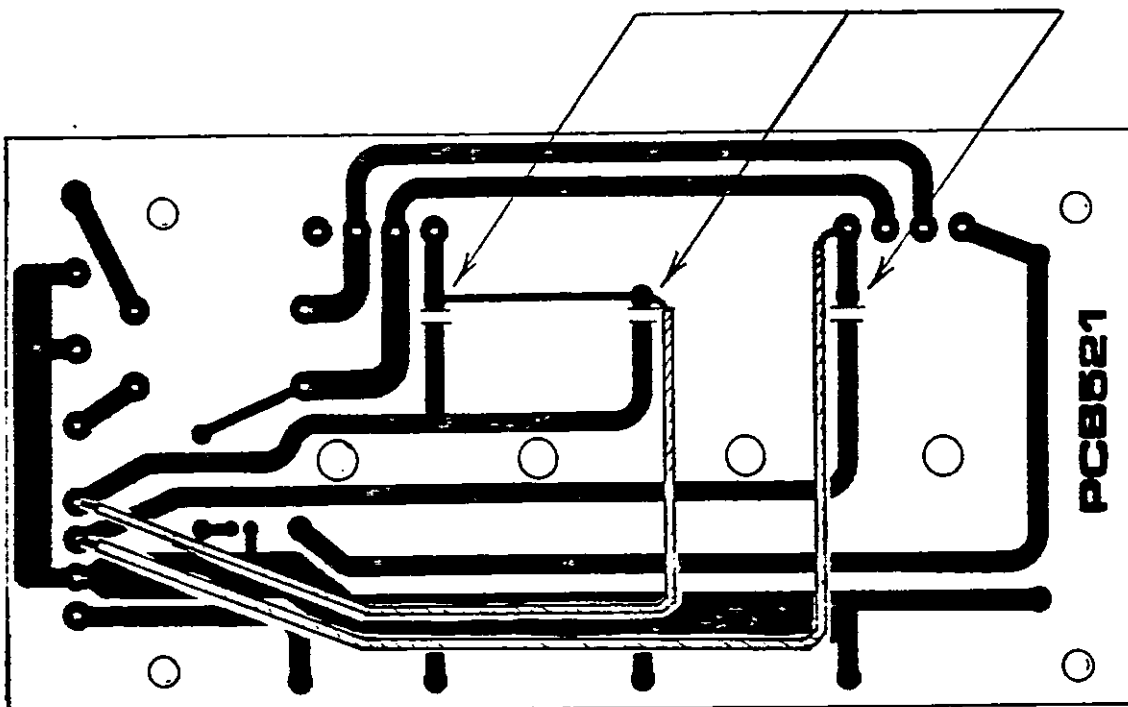
FIELD CHANGE ORDER

NO. 19-015

PAGE 3 OF 4

MODIFICATIONS ON THE REC702:

1. Cut trace at these
3 locations

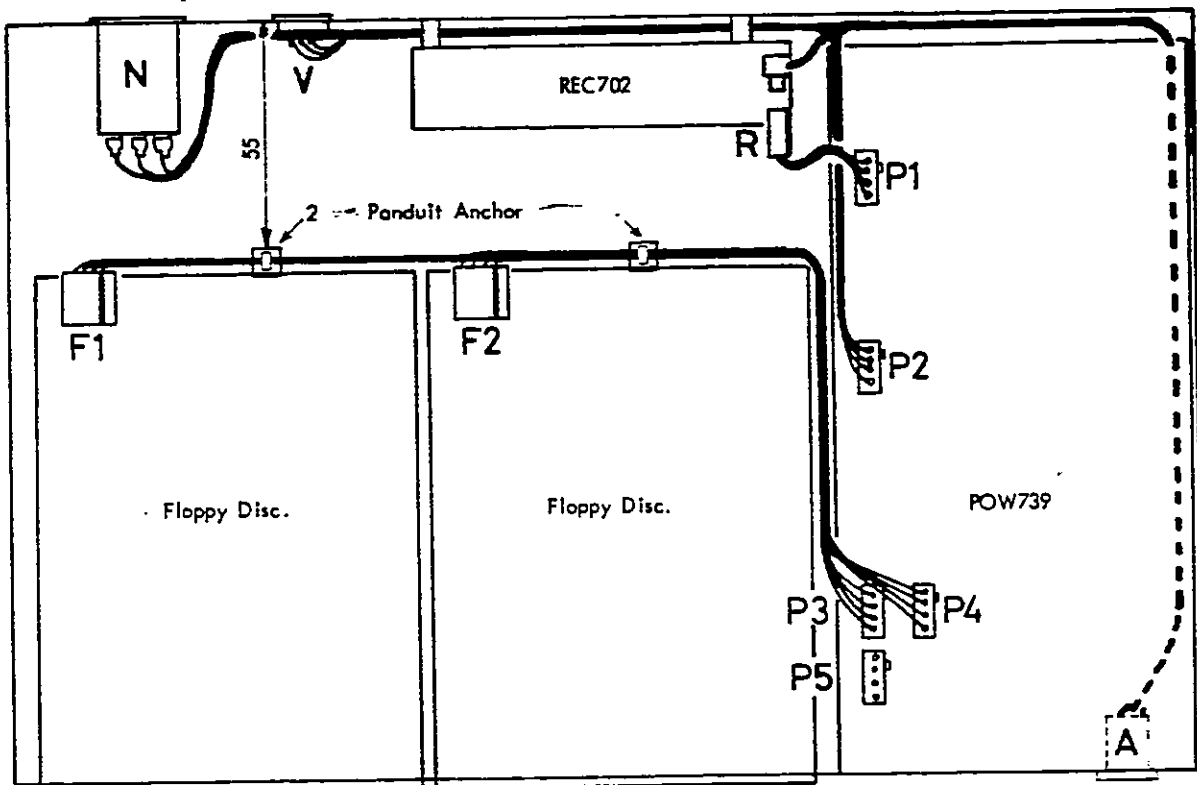


2. Mount the two wires as shown.
It is important that the physical routing of the wires
are as close as possible to the one shown.



FIELD CHANGE ORDER

MODIFIED CABLING:



- The power cables for the floppy drives are routed close to the drives.
- All other power wires are routed close to the back of the chassis.