



Production capabilities



RC's MODULE PRINCIPLES – HIGH SECURITY, NUMEROUS CONFIGURATIONS

The RC production facilities in Præstø were originally installed in an old school. As the necessity for additional production capacity increased, a new factory had to be built. Previously all RC-products were made here, but during recent years the volumes of production has shown such a steep rise that the factory has been turned into a plant for mechanical as well as electronic modules. This means that ready-assembled units, such as cpu's, controllers, memory modules, power supplies, terminals, display units, etc. are primarily made here. Each one of these modules is produced, quality inspected and ready-tested in the Præstø-factory so that they are suited not only to build up EDP-systems, but also suitable as spare parts of uniform quality. From the production in Præstø the modules continue to the system production facilities in Glostrup where all resources of a system and technical nature are gathered.

EFFECTIVE AND RELIABLE MODULE PROCESS

Based on the finished modules, which are kept in stock in Glostrup, the individual customer systems are constructed according to the specific requirements of the users. The consistently implemented production of modules makes the system production more effective and reliable as well as storage time is reduced. A thorough test-procedure ensures a precise and safe function of each module separately and in an integral system-whole. Finally the total configuration is inspected, after which the system is delivered to the customer.

REALISTIC TESTING – HIGH RELIABILITY

RC attach great importance to testing the final system realistically and adapted to provide the greatest possible reliability for the users. The testing is not limited to the individual modules – the separate components of the supply – but also the total system, including the customer's application software, is tested.



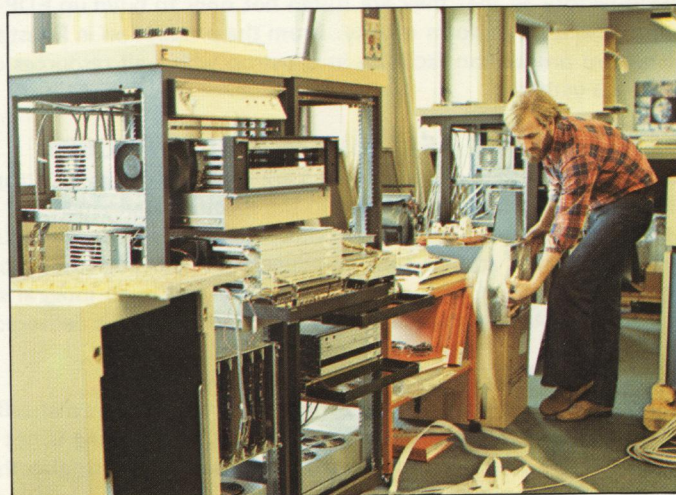


PRODUCTION FACILITIES

The production of EDP-equipment makes the heaviest demands on staff, production techniques and facilities. In the Præstø factory, built in 1969, the production is EDP-controlled and the most advanced technological methods are applied.

Wire-wrap technique is used for pilot series and minor productions of prints, and larger quantities are mounted by means of EDP layouted printed circuit cards – both methods highly automatized and EDP-controlled. Also the mechanical production is automatized, tape-controlled stamping/bending machines turn out finished uniform high-precision units. Each module is tested by computers just as the production of cables is also subjected to computer tests.

In Glostrup the individual modules are assembled by highly trained personnel, and the systems are simulation tested. For all processes the latest novelties in measuring equipments are used.



RCSL 42-i 0744

This datasheet is of a summary nature and specifications are subject to change without prior notice.