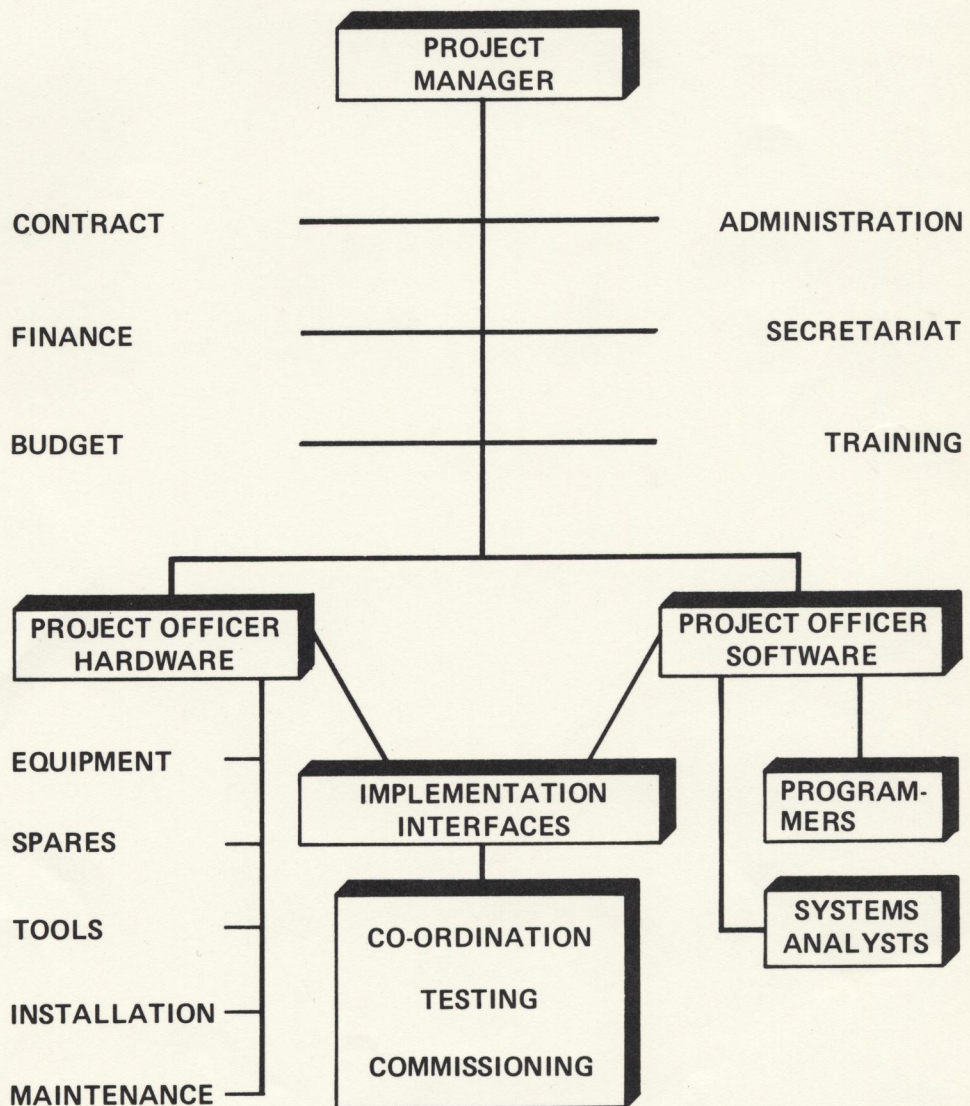




Product Management

A/S Regnecentralen gives the highest priority to achieving effective Project Management. Without planned supervision and co-ordination it is almost impossible for any project to meet its objectives in terms of costs, manpower and timeschedule.

Apart from some small projects, all the systems projects undertaken by RC are managed in much the same way. In other words they conform to a generalized management organization plan. The diagram below shows the way RC organizes a Project.



Right from the initial negotiations with the customer a Project Manager is selected and assigned to the Project. He is chosen for his ability to handle projects of this type and size and for his understanding of the many aspects of the work necessary to successfully implement such a system.

As can be seen from the diagram it is the Project Manager's responsibility to control and co-ordinate the different activities which must be performed during the project's duration and also to liaise with representatives of the company's legal, financial, administrative and educational departments about all aspects of the project. Normally the Project Manager will delegate technical responsibility to a Hardware Project Officer and a Software Project Officer. They will in turn build up teams of qualified engineers, analysts and programmers.

The Hardware Project Officer is responsible for the equipment, spares, tools, etc. which will be supplied under the project and for arranging for installation and maintenance on the customer's site.

The Software Project Officer is responsible for the work of the systems analysts and programmers who will design the system and produce and test the software modules to be used.

However, the Project Manager will at all times retain overall responsibility for the running of the project. This is only possible with regular progress reports being made to him by the Hardware and Software Project Officers and the enforcement of rigorous internal standards of procedure and documentation.

