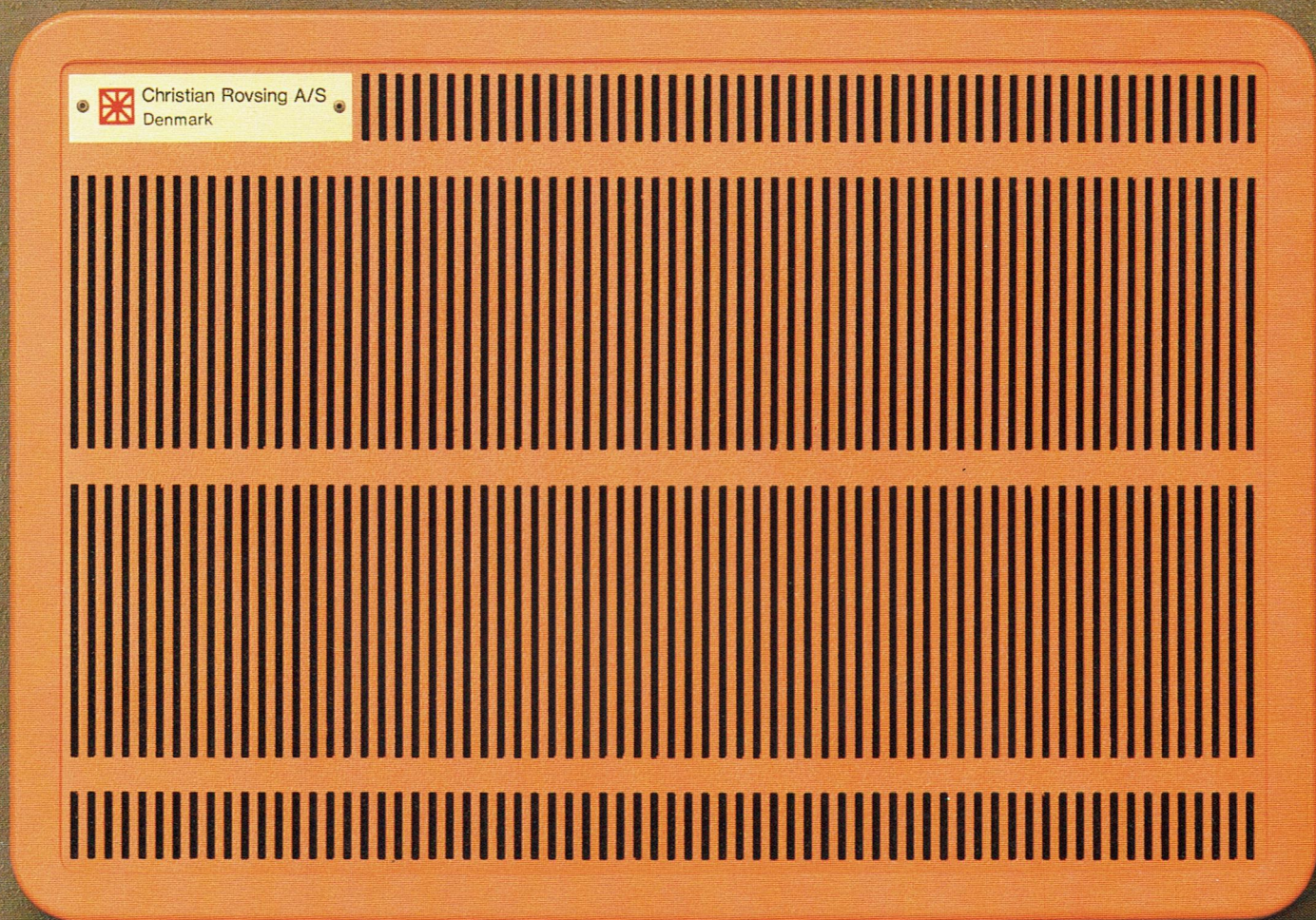


CRISS

Data- and Voice Communications
on One Integrated Network

Christian Rovsing Integrated Services Switch



Christian Rovsing A/S

CRISS

Data- and Voice Communications
on One Integrated Network

Voice Switching

- Analogue
- Digital
- μ Law
- PCM
- CVSD
- Store and Forward

- 400 Lines Non-Blocking
- 2-Wire
- 4-Wire
- 14 Signaling Systems
- Mil-Standards
- CCITT-Standards

Security

- Tempest
- EMP
- Trusted, Verified Software
- Crypto Interface
- Secure Wiring

- Conforms to Trusted Software Recommendations
- Conforms to Mil-Standards

Software

- ADA
- Cobol
- Fortran
- Pascal
- Swell
- Unix

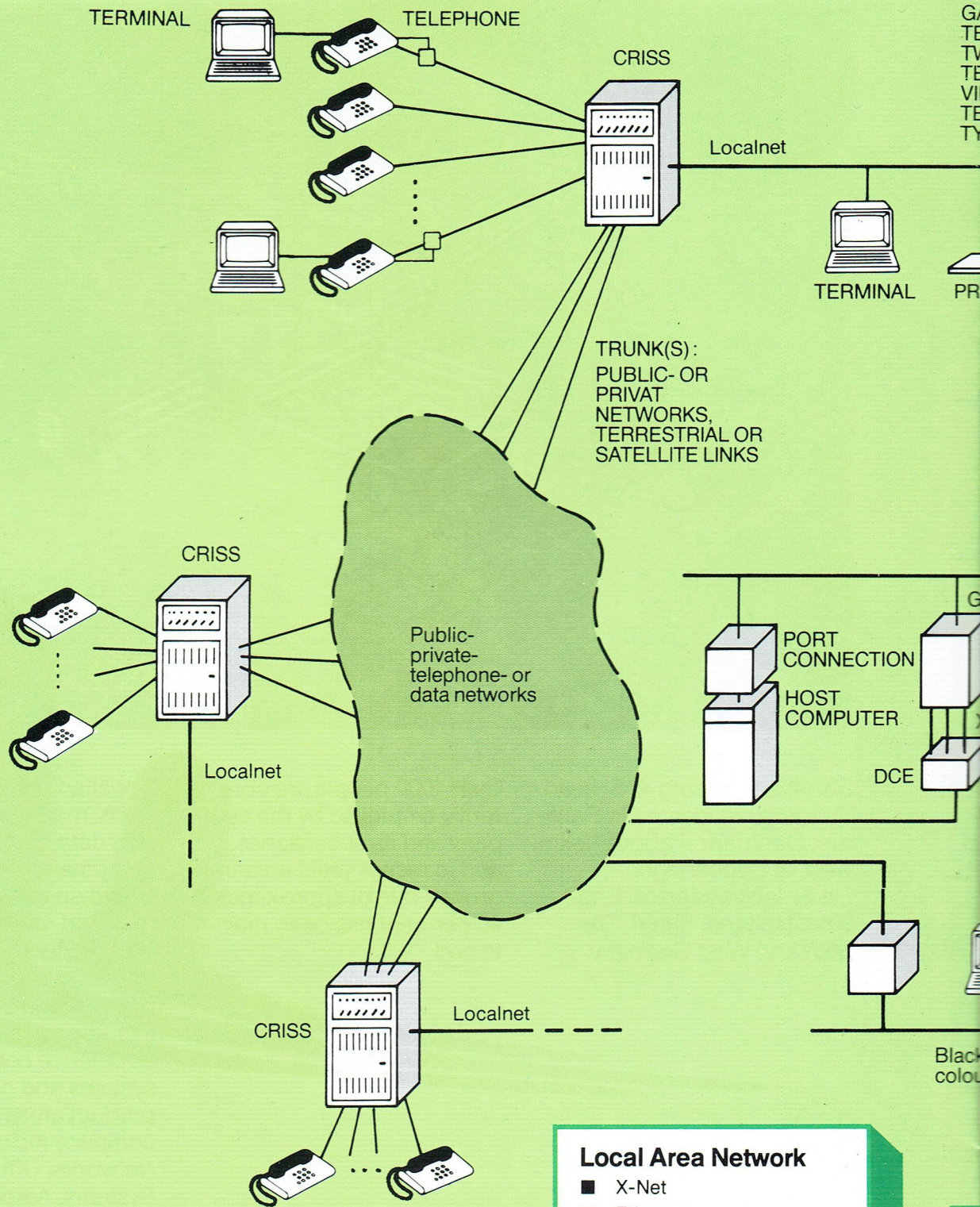
Message Processing

- ACP-126
- ACP-127
- ACP-128
- Adat-P3
- Electronic Mail
- Store and Forward

- 350 Messages in
- 800 Messages out
- Less than 3 Seconds Delay

Hardware

- Modular
- Multiprocessor
- Fault Tolerant
- N + 1 Central Processor Redundancy
- N + 1 Interface Redundancy
- High MTBF (Meantime Between Failure)
- Short MTTR (Meantime to Repaire)
- Mil-Standard Quality Assurance



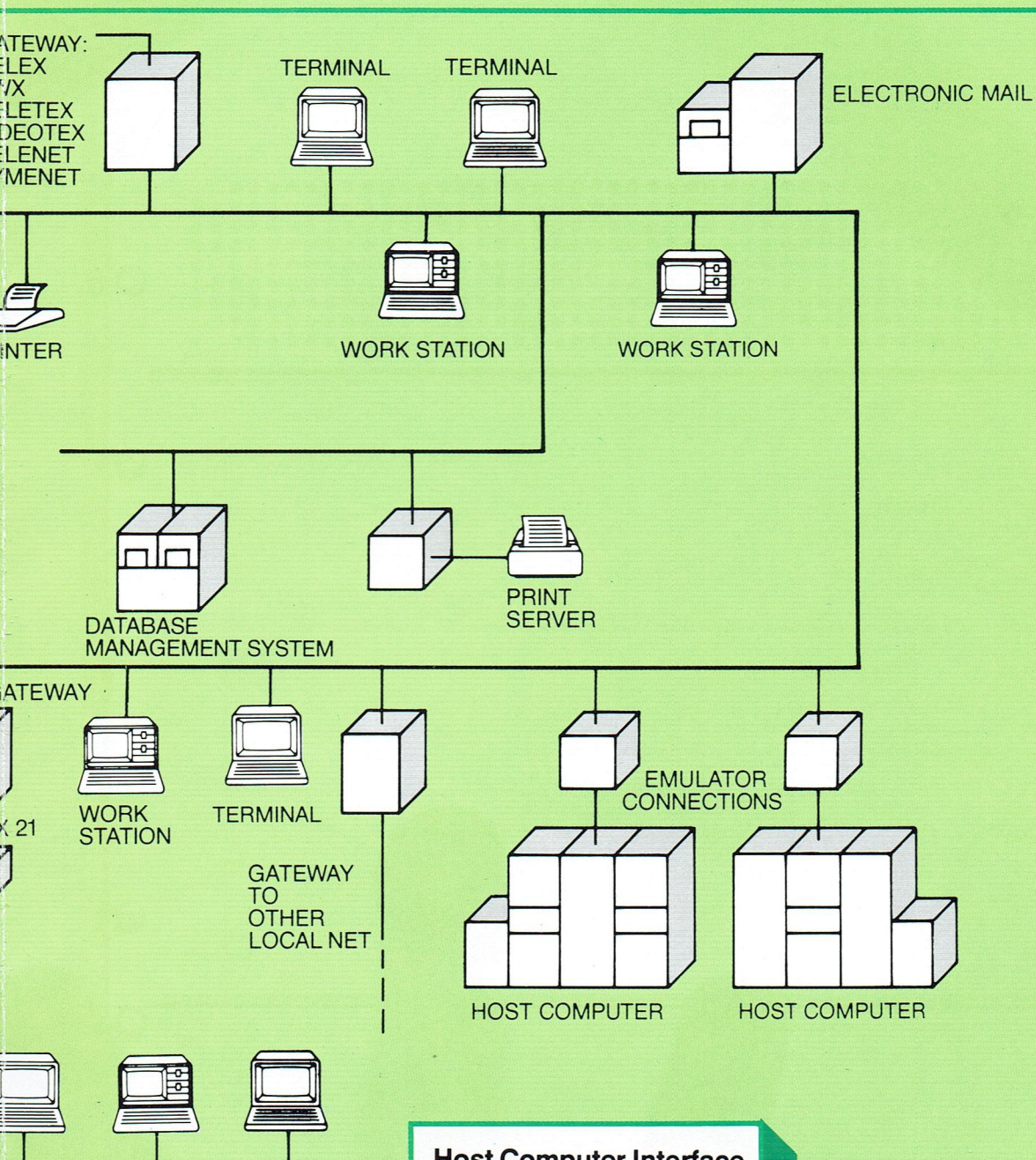
Device Protocols

- TTY
- BSC 3271 IBM
- 2780/HASP IBM
- 3276/3767 IBM
- 3274 IBM
- 7502 ICL
- TC 500 Burroughs

Local Area Network

- X-Net
- Ethernet
- Wide Band Net
- Fiber-Optical Net
- TDX-Net

- 1.8 Megabits/Sec.
- 16 Megabits/Sec.
- 256 Terminals/Branch
- 5 Kilometers Distance



black and white or color graphic workstations

Packet Switching

- X 25 CCITT
- X 75 CCITT
- Litsync Nics-Tare
- ITP Arpanet (DDN)
- NTP Arpanet (DDN)

1400 Packets/Second

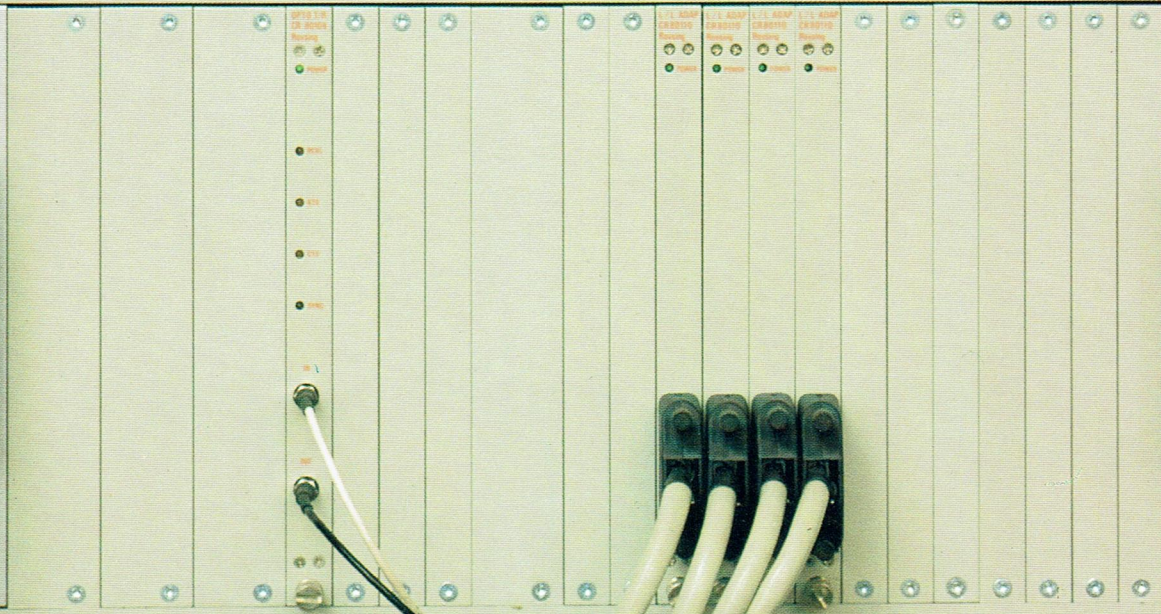
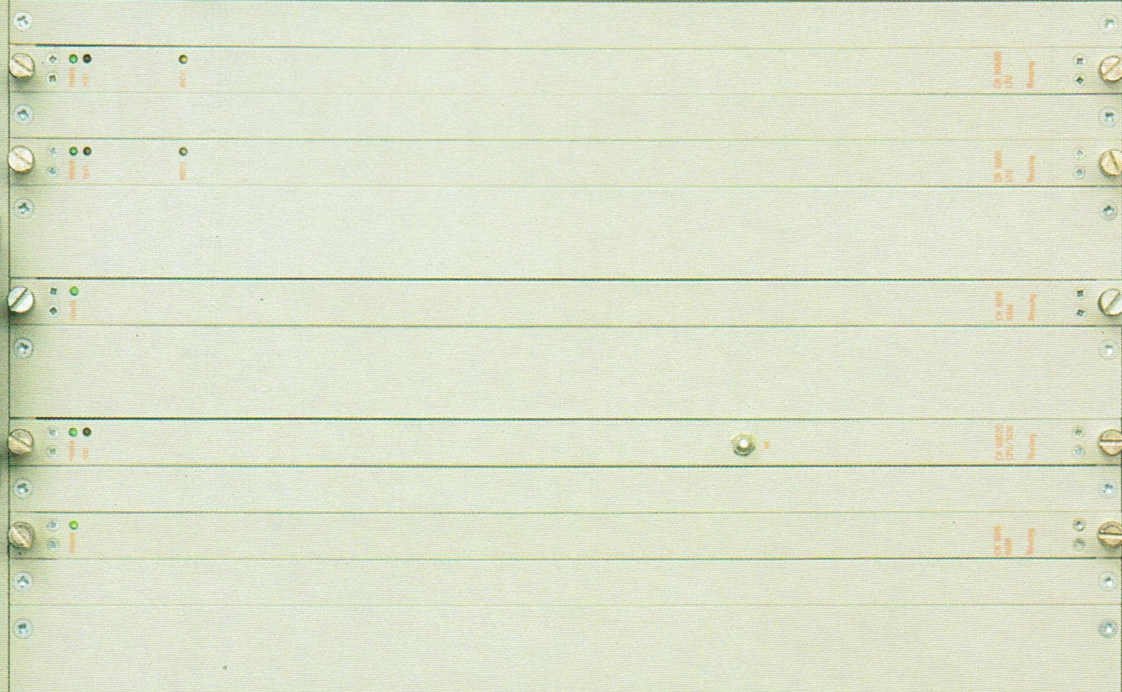
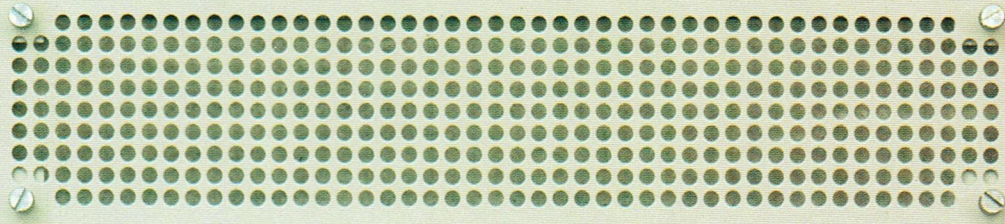
Host Computer Interface

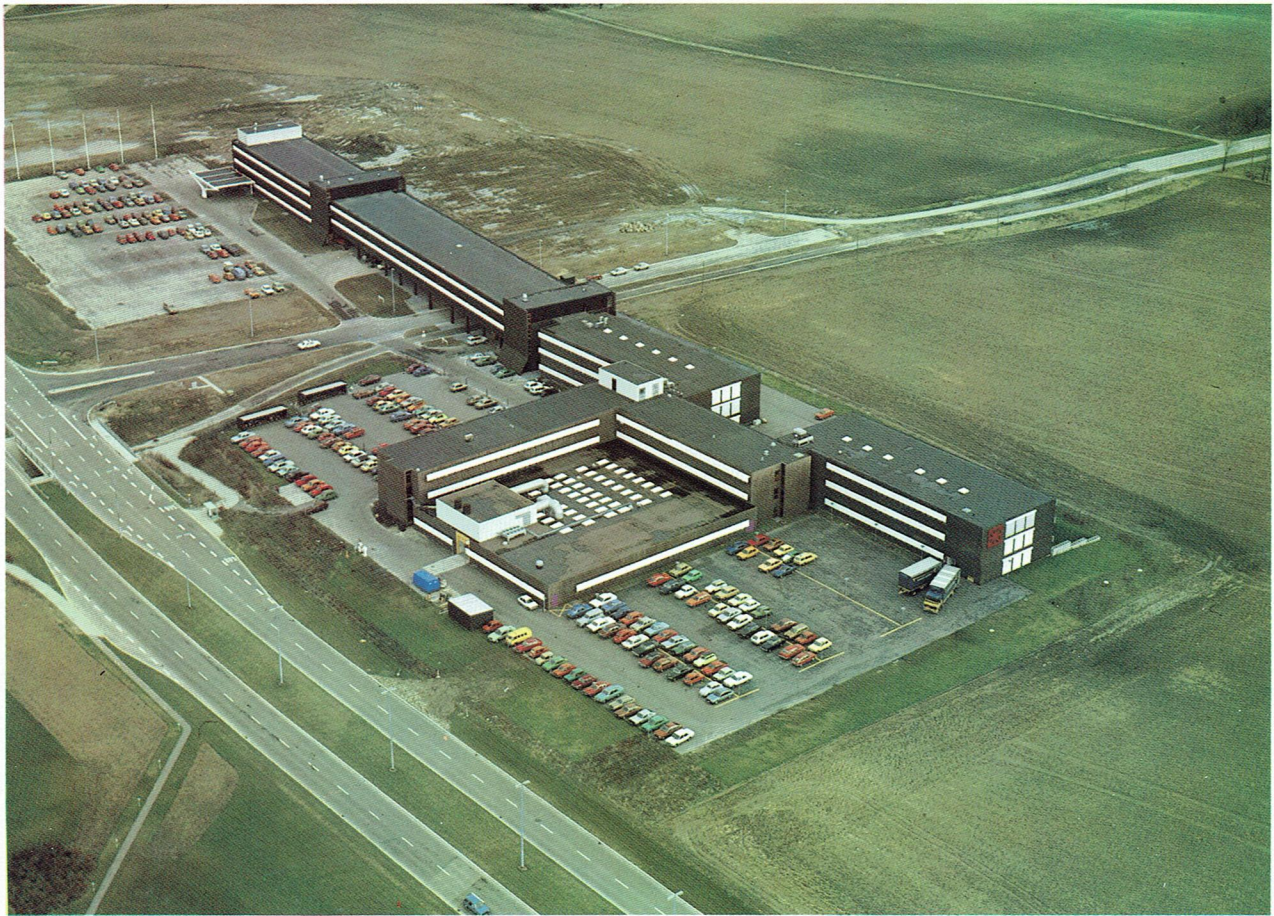
- IBM
- Univac
- Honeywell
- Digital Equipment Corp.
- Burroughs
- ICL
- Control Data
- Siemens
- Amdahl
- Hewlett-Packard
- Norsk Data

- Block Multiplexer
- Bite Multiplexer
- Channel Interface

Line Protocols

- Start/Stop
- HDLC
- SDLC IBM
- SNA IBM
- UDLC UNIVAC
- X 25 CCITT
- X 75 CCITT
- BSC Multipoint IBM
- BSC Point-Point IBM
- BSC Transparent IBM
- CO 2 ICL
- CO 3 ICL





Christian Rovsing A/S' headquarters are located in Ballerup, Denmark – about 12 km west of Copenhagen. Other facilities are in England, Holland, Spain, The USA and West Germany.

Over 1000 people are currently employed by the company and its subsidiaries, and in recent years an annual growth rate of approximately 40 per-cent has been maintained.

Christian Rovsing A/S designs, manufactures and markets data communications equipment and networks based on the company's own mini and microcomputers. The products are delivered and used world-wide on a broad range of applications including commercial as well as defence communications systems and networks. Other product areas covered by the company include Local Area Networks, Office Automation Systems, Aerospace Electronics and commercial EDP systems.

Please contact us for further information.

Axel Hvidtfeldt,
Director of Sales

Christian Rovsing A/S
Lautrupvang 1
Postbox 227
DK-2750 Ballerup
Denmark
Phone: +45 2 65 11 44
Telex: 35111 cr dk
Telefax: +45 2 65 43 73

Christian Rovsing Corp.
1337 Thousand Oaks Blvd.
Suite 220
Thousand Oaks
California 91362
U.S.A.
Phone: 805-497-6722
Telex: 910-336-5733
Telefax: 805-497-8271